

SCASD

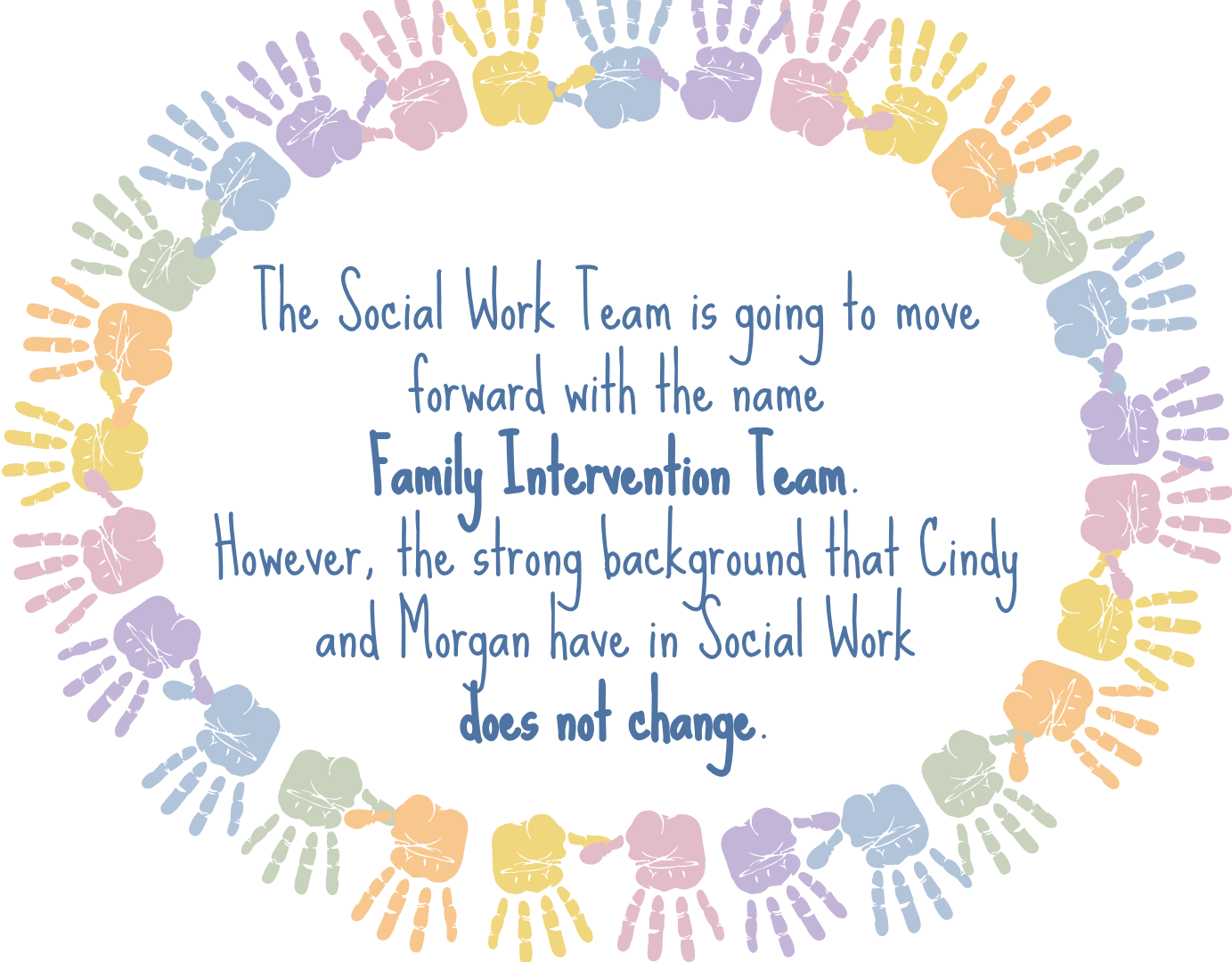
Family Intervention Team





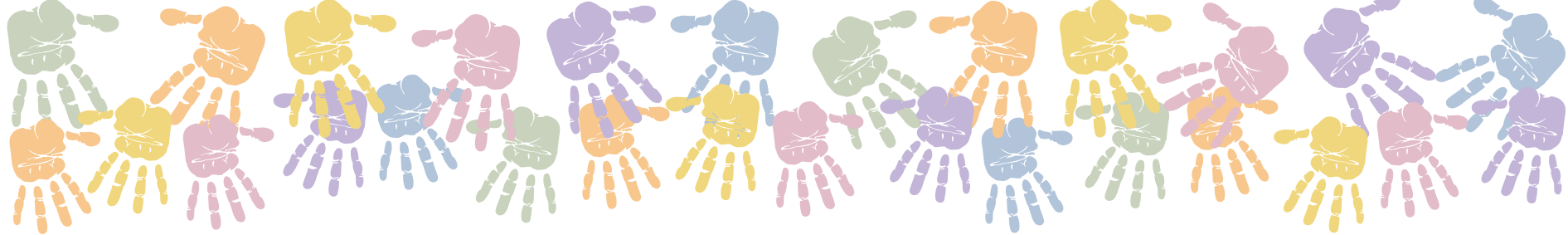
Cindy Sergeant-Smith -
Home and School Visitor

Morgan Bechdel -
District Social Worker



The Social Work Team is going to move
forward with the name
Family Intervention Team.

However, the strong background that Cindy
and Morgan have in Social Work
does not change.



As a Team

Family Intervention Team (FIT)



A decorative border composed of numerous colorful handprints in shades of blue, purple, yellow, orange, and green, arranged in a circular pattern around the central text.

Community Resources

We connect students, families and other SCASD members with resources and services within the community. Those include but are not limited to clothing, mental health, drug and alcohol, food, internet, parenting, grief, and much more

[Social Work Community Resource List](#)

[Covid Resources](#)

Food Bank Referrals



FTT can help fill out a Food Bank Referral which speeds up the process to get the your necessary food.

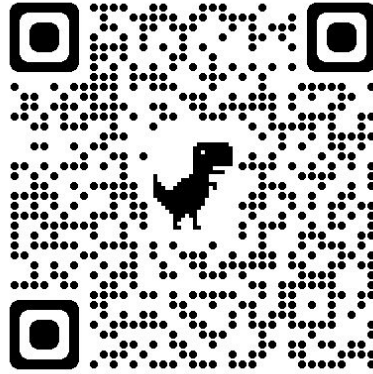


Needs Assessment and Donating

22-23 Needs Assessment

Please fill out this form if you have any unmet needs.

This includes but is not limited to..
A student, family or staff member.



Monetary donations can be made through the SCASD Education Foundation via the Mental Health Matters Fund here:

<https://scasdfoundation.org/donate/>

A quick and easy way to donate is by using the [Target Registry](#)



Partnerships

- One State and State High
- Soroptimist International of Centre County
- PSU Phi Sigma Sigma
- State College Food Bank
- YMCA Anti-Hunger Program
- Housing Transitions
- Mattress Warehouse
- Happy Valley Liquidation
- The Backpack Foundation
- PSU Athletics
- Dancing Against Hunger
- Individual classrooms
- PSU Bears
- Ciocca Dealerships
- Fullington Trailways
- Community Members
- Multiple Churches





Helping Hands Pantry



Photo was taken
after the pantry
was freshly
stocked from the
SC Food Bank.



Partnering with the SC Food Bank



- Experimental program to combine the food bank and the school district
- Provides students, families, and staff with food in case of emergency situations
 - Those will be given information about SC Food Bank and helped with referral if desired
- Food will be stored in the office between Morgan and Cindy
- Needs Assessment should be filled out to utilize the pantry



Helping Hands Pantry

Article on Helping Hands Pantry - [Here](#)



Community Donations

- Generous community members have donated money and supplies, filling the other half of our pantry
 - School supplies
 - Pens, pencils, notebooks, folders, sharpeners, scissors, erasers, utensil boxes, binders, etc.
 - Household cleaning items
 - Bleach, towels, hand soap, disinfectant wipes, plastic wrap, foil, laundry soap, storage baggies, trash bags, sponges, tissues, paper towels, etc.
 - Hygiene products
 - Razors, deodorant, combs, shampoo and conditioner, body wash, bandaids, hair ties, toilet paper, etc.





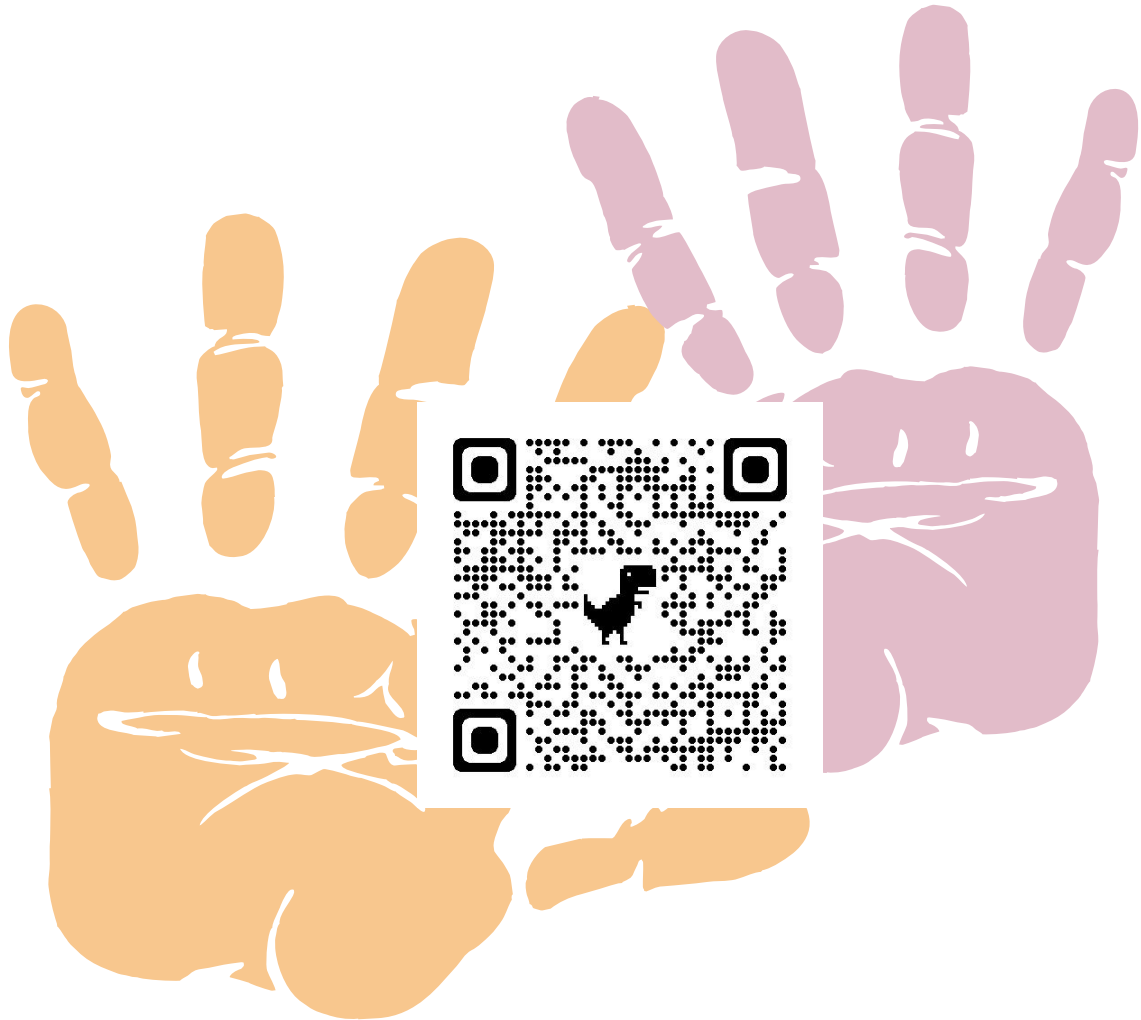
Other Donations

Apartment Items:

- Individual cooking burners, Cooking utensils, Pots and pans, New bedding sheets, Throw blankets, New pillows, Vacuum cleaner, Mixing bowls, Cookie sheets, Can openers, Strainer, Scrub brush, Furniture polish, Broom and dustpan, Laundry hamper, Shower curtain, Window curtains, Silverware, Cups and glasses, Bowls and plates, Paper plates and plastic silverware, Microwave, Portable heaters, Small toolboxes, Crockpot/pressure cooker, Humidifiers, Tupperware containers, Trash cans, Washing bins, Flashlights, etc.



If you're looking to
donate, contact
Morgan or donate
directly through the
Target Registry



Other Ways to Donate

Donate to the Helping Hands Pantry

Donations will be used for hygiene items, household products, school supplies, and other house and apartment items.

Checks may be made out to SCASD Student Services and make sure to include "Helping Hands Pantry" in the memo line of your check.

Donate to the Education Foundation

Give online by selecting the Mental Health Matters Fund from the "Select Campaign" dropdown, or by mailing a check to:

SCASD Education Foundation Mental Health Matters Fund
240 Villa Crest Drive
State College, PA 16801

Be sure to include the Mental Health Matters Fund in the memo line of your check.



Links to Know and Utilize

[Social Work/Family Intervention Website](#)

[Target Registry Link](#)

[Helping Hands Article](#)

[Lion's Closet](#)

[211](#)

[PA Medical Assistance](#)



Most-used Community Resources

State College Food Bank

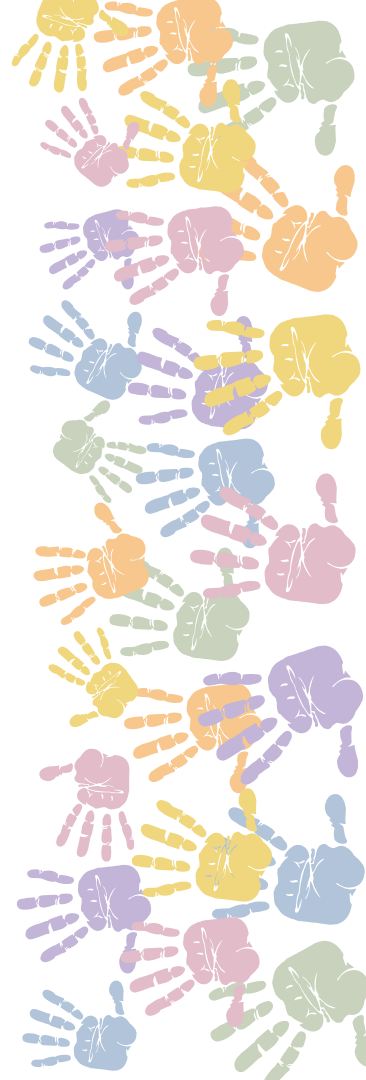
Centre Helps


MH/ID Office

TIDES

YSB

Housing Transitions





Don't hesitate to
reach out if you have
any questions!